

ShopTalk

Greenville Woodworkers Guild



April 2016



April 4 meeting -Kevin Kauffunger Director of Training, Freud Power Tool

The Greenville Woodworkers Guild offers special thanks to Eddie Ellis, Freud Tools, for arranging this program, and to Freud Tools for sponsoring our featured presenter.

Kevin Kauffunger



Director of Training, Freud Power Tool/Bosch, Bath, Maine

Kevin Kauffunger is Freud Tool Company's Director of Training and has been with Freud since 2006. Before coming to Freud, he spent time as a window & door maker, and also as a furniture maker. Kevin is a graduate of the College of the Redwoods' Fine Woodworking Program (The Krenov School) and holds a degree in Economics from Penn State. His work has been featured in Fine Woodworking magazine. He currently lives in Bath, Maine.

As an undergraduate at Penn State, Kauffunger majored in economics—not the sort of degree that typically leads straight to a career in fine furniture-making. But Kauffunger had always been as interested in creating art and craft as in crunching numbers. After college he spent his 20s doing carpentry, making windows and doors for old houses, building museum exhibits, and doing cabinetwork. Then he began to build furniture, and that triggered a desire to learn the finer points of the craft. His work bears the hallmarks of his time at the College of the

Redwoods—clean lines, elegant details, beautiful woods, and handmade hardware.

Since finishing the program and moving back to Pittsburgh, Kauffunger has been working for a tool company, a job that keeps him on the road much of the time. He currently rents bench space in a cabinet shop and gets there as often as he can. Just recently, he and his girlfriend bought an old house in the heart of the city and acquired with it a two-car garage. That garage will be a shop before you can say James Krenov.

A Graceful Hall Table

From (Fine Woodworking Magazine - April 2010)

Barnsley style combines Arts and Crafts simplicity with Federal elegance
by Kevin Kauffunger

This Edward Barnsley-inspired table incorporates many of that designer's trademark elements. In the course of building the table, Kevin Kauffunger demonstrates how to create these elements: the gun-stock joint, a type of haunched miter, combined with floating tenons; the pencil-roll detail, shaped on the router table; and the chamfered, mitered rails. Finally, he adds a finishing touch with "holly stringing".



2015-2016 Officers

David Aman
President

Rob Barhorst
Executive V. P.

Bill Fuller
Treasurer

Chuck Graham
Secretary

Bruce Rankin
Vice President, Charitable Projects

Wayne Comstock
Vice President, Communications

Bill Keener
Vice President, Educational Activities

Vann Matthews
Vice President, Fund Raising

Bill Gay
Guild Accountant

Karl Kelly
Education Center Superintendent

John Roberts
At Large

Darryl Roberson
At Large

Al Socha
At Large

**Greenville
Woodworkers Guild**
P. O. Box 825
Mauldin, SC 29662
864-299-9663

www.greenvillewoodworkers.com

David Aman
President



THE PRESIDENTS CORNER

In recent months we have talked about what a guild is (an organized group of people with common interests) and the people that make up a guild, the different talents, skill levels, interest, etc. We talked about the body and the various parts that make it whole (the Guild vs. the human body). Now I would like to turn our attention to “Why am I a member” of the Greenville Woodworkers Guild. Our familiar refrain is “it’s the best deal in town”! But why are YOU a member? Is it just to have access to really great tools and machines to do your own personal thing with? Is it because we have such terrific mentors and classes to learn new things? Is it because of the seminars with nationally recognized presenters to enable us to learn more or hone our existing skills? Is it your desire to give back to the community (from which we take so much) through charitable work? Is it the storehouse of information in our library; or to buy quality wood at inexpensive prices; attending our monthly meetings, or to enjoy the fun and fellowship offered on a regular basis? Only you can answer this question.

I submit to you that in order to be a “full-fledged” member of this Guild, you must do all of these things. It is somewhat upsetting that we have a record number of members, over 700, and only a portion show up for our monthly meetings. Last month we barely had 125 members and

guests, yet we had an outstanding presentation of ideas, projects and “show and tell”. Meetings (two hours each month) are the glue that holds this organization together. It’s where we interact with new and old members, guests and presenters; where we learn and conduct the business of the Guild; where we learn and share new ideas, skills and projects. Without membership meetings it would be like stumbling around in the dark without a flashlight. It is like the body that is missing a body part. The Guild also loses when members do not attend: other members do not become acquainted with you; we never see or hear your views or activities; the Guild as a whole is missing a vital part, which is you. New members in particular deserve to meet their officers, the supervisors and mentors, and converse with the older members to become safer and more knowledgeable woodworkers. That is a primary reason we have meetings, to sustain and grow the organization. We need you at our monthly meetings. Please consider offering your thoughts by contacting me at presgwg@gmail.com. I would love to hear from you. Be safe so we can see you at the next meeting!

Announcements:

New glass panels in the shop doors

Thanks to Stinnes Jordan for installing glass panels in the doors from the lobby into the shop, and into the lumber room. Hopefully this will improve safety by enabling people to see on "the other side" before opening a door.

Please check out the paved and lighted parking in the rear of the building during monthly meetings or special events. We will make an effort to keep the rear door unlocked during these times for your convenience.

Giant tool sale/silent auction coming up Saturday morning, April 2

You do not want to miss this tool sale! Doors open at 8:30 AM and the sale begins at 9:00 AM. At 11:15 AM a drawing will take place for sixty "Guild Bucks", to be used to buy things at the sale on that day. The Guild will also close the silent auction at that time and declare the winners. A new automated system requires that everyone who makes purchases will need to register, a very simple procedure as you enter the building. This will allow you to enter the drawing for the "Guild Bucks", so be sure to pick up a ticket. There are high quality items for everyone, hand tools, power tools, carving and lathe tools plus a lathe. And, you will want to take advantage of the many bargains on our \$1, \$3 and \$5 tables. We have made one significant change to the rules this year, no discounts from the marked prices as the goods are priced to sell! Come, bring your friends, neighbors and relatives as it is open to the public. Any questions may be sent to Aubrey Rogers, Tool Sale Chairman, at rogers.aubrey@yahoo.com

IWF show August 24-27, Atlanta, GA

You don't want to miss this IWF show, the largest woodworking show in North America. Make plans now to attend!

Personal Emergency Contact Information

There have been several instances in recent weeks that we needed emergency contact information on some of our members. Some instances occurred at the Guild shop, while others were a need to contact a family member. We understand that many people consider this personal information, and do not want it shared. The Guild will not share this information with anyone outside the Guild, and it will only be used when necessary. It will be on our main data base only accessible by authorized people, and on the "Shop User" data base accessible by the Supervisor where you sign in at the Supervisor's Desk. Here's how you can help by providing emergency information, i.e. names, phone numbers, etc.:

Here is how members can update their emergency info:

- Go to website: gwgmembers.com
- Press [Login].
- Enter your password.
- Press on your name at the top of the form. (Then wait a moment)
- Press [Edit profile].
- Scroll down and enter your emergency information in the four emergency contact fields.
- Scroll down to the bottom of the form and press [Save].

After the membership team has updated the information on our local systems, the supervisor can view the emergency contact info on the shop computer. On the screen of the Shop User Database press the button [Contact info/Emergency]. A blue form with the emergency information will open up.

Reminiscing

As we celebrate our thirty-fifth year, let's think back fifteen years ago. Roy Painter recently sent me a roster from January 28, 2001, listing 91 members. Of those, I recognize at least 25 that are still members, and a number that are deceased or moved away. Way "back then" dues were \$40 annually, with no shop or Education

Center to come to. We met in the Greenville School Districts Vocational Center off I-385, and often had few seats to sit in. It was there that the dream of our very own Education Center began to form in the minds of our leaders. The president then was Jim Kilton, and every member was expected to make at least one toy for the kids at the Myers Center for Christmas. Back then, more than fifty percent of our members were at every membership meeting, and almost everyone volunteered to help in some way on charitable projects during the year.

— David Aman

May Presentation

Andy Nuffer



Andy is Vice President of Sales for Robinson Lumber Company, Greater New Orleans Area. He is a graduate of Clemson University with a B.S. in Wildlife and Fisheries Biology, and Temple University, with a M.S. in Educational/Instructional Technology. He previously worked for Thompson Lumber Company and Baille Lumber Company. Robinson Lumber Company is a leading U.S. importer/exporter of lumber and operates globally in over 62 countries.

Our Program Chairman Glenn Torbert has been attempting for almost a year to get Andy to Greenville, and this will be a rare opportunity for you to hear this outstanding presentation on all aspects of wood technology. You will learn all you need to know about the chemistry of wood, why it twists, bends, warps, etc. and air-dried vs. kiln-dried. You really don't want to miss this meeting!

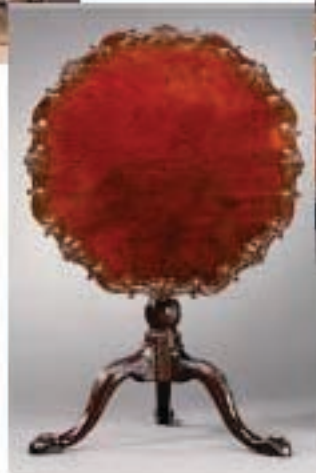
**Guild members and spouses are invited to a group trip to the
Museum of Early Southern Decorative Arts in Winston-Salem, NC.**

May 18 & 19

You must register no later than April 4 meeting . Call David Aman, 270-3740



MESDA Exhibits



Hawthorne Inn



Most woodworkers have heard about it, but few have experienced it! This museum houses one of the best and most studied collections of early American furniture anywhere. We have a unique opportunity to

travel as a group to see this exhibit, tour Old Salem, an early Moravian settlement, share a banquet meal and do much more! We leave Greenville on May 18 and spend the afternoon in Old Salem, then enjoy a banquet at

the Hawthorne Inn, tour the museum and other activities on May 19, then return home. Call David Aman, 270-3740, for information. You must register no later than the April 4 meeting at gwgmembers.com.

CHARITABLE PROJECTS / February 2 to March 7

	Hours
Beads of Courage (Bead Containers)	16.5
Cancer Survivors Park (Benches).....	0.5
Conestee Park (Signs)	4
Fine Arts Center (Desk)	3
Habitat Restore (Furniture Repair)	0.5
Santa's Workshop (Toys)	38.5
Total	63

MENTORING CLASSES / February 2 to March 7

	Hours
Combined total hours for adult classes	403
Youth Classes	149

Charitable Projects

The following table lists all of the charitable projects presently on-going at the Guild. A couple are non-Board approved, but meet the criteria for acceptable projects. If you are looking for something to do, or just want to do your part in sharing in some of these projects, please contact the project leader, or Chairman Bruce Rankin at char@greenvillewoodworkers.com. Help is always needed!

<u>Name of Project</u>	<u>Organization</u>	<u>Team Leader</u>
Beads of Courage	Greenville Children's Hospital	Jim Kilton
Toys	Many Different Organizations	Rob & John Arnold
Veterans Urns	SC Veterans Cemeteries	John Arnold
Child's Haven Step Stool	Child's Haven	Eric Thompson
Conestee Park Signs	Lake Conestee Nature Park	Dennis Defrancesco
OLR Pews	Our Lady of the Rosary	Tony Archino
ReStore Furniture Display	ReStore Habitat	Bill Brett/Chris Calvin
Fine Arts Center Desks	Greenville Cty Fine Arts Ctr.	Mark Barnes
Youth Work Stations	Triple Tree Aerodrome	David Dewease
Cancer Cat Trophies	SC Ovarian Cancer Foundation	Dick Best



Congratulations!

Guild members Jim Kilton and Aubrey Rogers are currently featured in the "Artist Showcase" at The Blood Connection Donation Center, 435 Woodruff Road. Their exhibit of "fine art" began February 15 and runs through May 12. A reception was held March 10 honoring them and their art. Jim's work includes

many of his beautiful pieces such as ornaments, bowls, platters, and "Beads of Courage" boxes. Aubrey's work include some very artistic turnings and features his model trains, "Alpha and Omega". These trains are historically accurate models representing "the beginning and end of the majestic era of steam engines, covering one hundred and fifty years." Both of these

gentlemen are fine artists in wood, members of the Carolina Mountain Woodturners, and have been actively involved with our Guild for many years. You will often find them at the shop mentoring students, supervising shop activities, and working with the lumber and tool sales. It would be well worth your time to visit the Blood Connection and view this outstanding exhibit in their gallery.



Bird House Contest

Thanks to Rosie Gaddy for chairing this year's Bird House Contest, to be held at the May 2 Membership meeting. She has develop the rules, selected the judges, and leads the competition! There are three catagories:

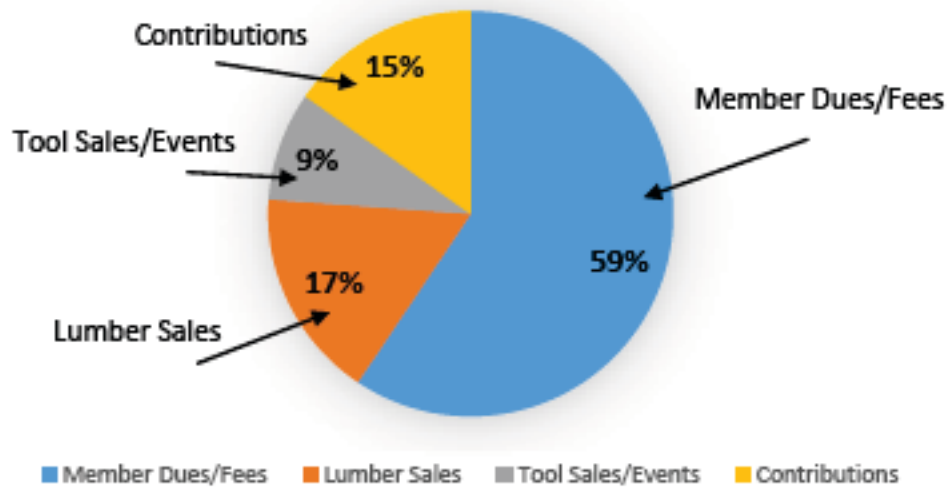
1. Functional
2. Decorative/Whimsical
3. Green

There are two divisions.

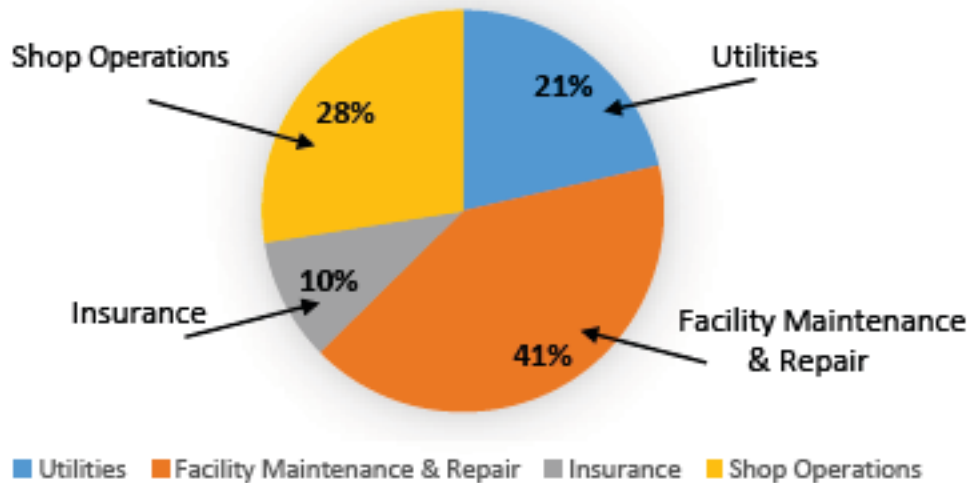
1. Youth (under 18)
2. Adult

Check out the flier on the bulletin board or the website for the specific rules. Hopefully, some of these bird houses will find a home on our campus.

Where Guild Funds Come From



Where Guild Funds Go

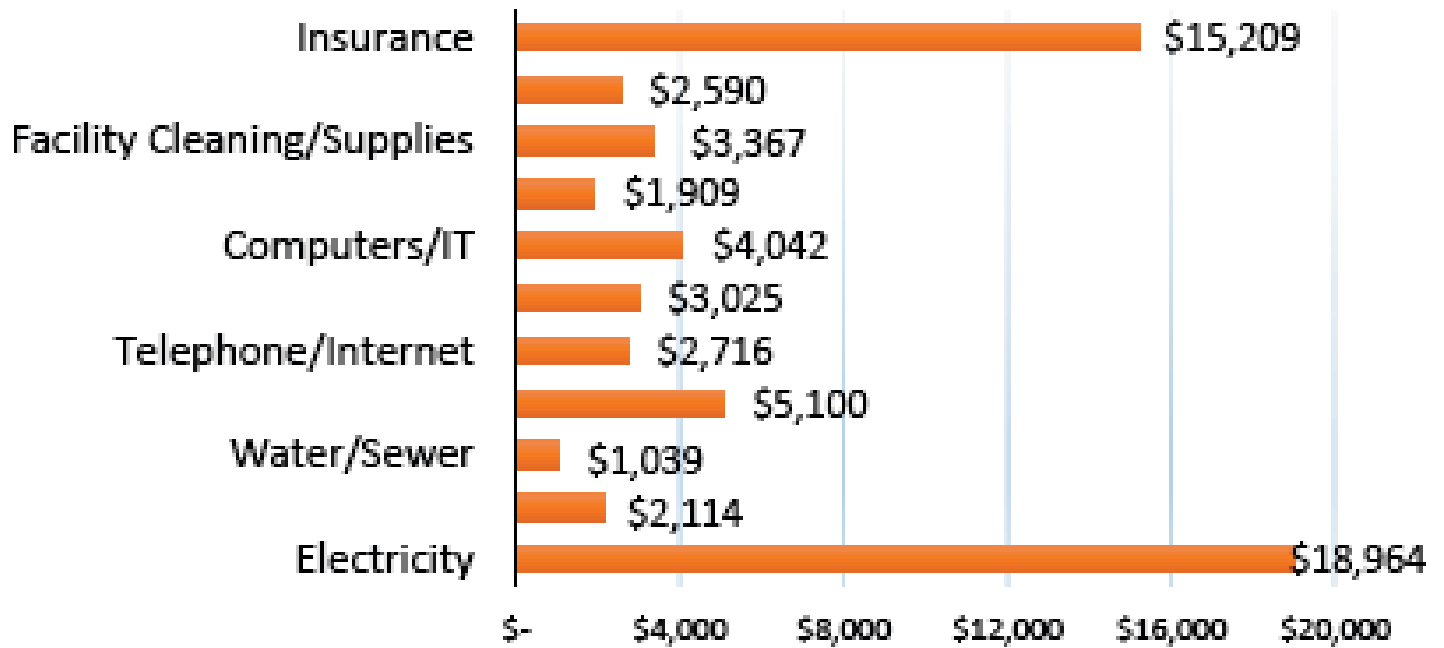


The above charts depict where the Guild's funds come from and where they went for the calendar year 2015. During that time, we had to spend a considerable amount to repair the roof of both buildings to eliminate serious leaks. Our buildings are now approaching 16 years of age, and nothing was done to the

structures when we built the shop and auditorium. Other expenses for facility maintenance & repair will be required over the next few years. As a result of this expenditure, our expenses for calendar year 2015 exceeded our income by \$3,290. This is the primary reason we have to maintain a reasonable cash balance in our capital fund. This is

also why your Board makes every effort to stay within our annual budget. Our facilities are valued at over one million dollars, and we must continue to maintain them appropriately.

Selected Expenses for 2015



The chart shows some selected operating expenses for the calendar year 2015. Most of these are fixed expenses, but some, like electricity, could be lowered by turning off lights in unoccupied rooms, or turning off the dust collector when you finish. There are other ways to help save on expenses, but it depends entirely on you, the member, to eliminate any unnecessary expenses. Let's help each other by being observant, conscientious and a good steward of the Guild's (your) money. Nowhere else can you get such a bargain as our Guild.

Show & Tell

For more photos see our web site



Platter and
Segmented Turnings
by Jim Kilton



Live, Laugh, Love Wall Plaque
by Karen Sheldon



Box
by Sandy Cochran



Morris Chair
by Gene McCall



Optimist Pram Model
by Chris Calvin



Tambour Box
by Barry Jones



Napkin Holder with Salt and Pepper Grinders
by G. Scott Kilgore



Box by Rick Raburn



Platter by Dave Paul



Cribbage Board by
Karen Sheldon



Hex Beads Box
by Roy Allen



Boxes by
John Arnold



Bowls by
Van Matthews

NEXT GUILD MEETING - MONDAY, April 4, 2016 - 6:30 p.m.

New member orientation begins at 6:00 p.m. in the Board Room. / Social time begins at 6:15 p.m.

Greenville Woodworkers Guild
Education Center
209 Holly Ridge Drive
Greenville, SC 29607
(864) 299-9663

For more information
www.greenvillewoodworkers.com



Greenville Woodworkers Guild
P.O. Box 825
Mauldin, SC 29662